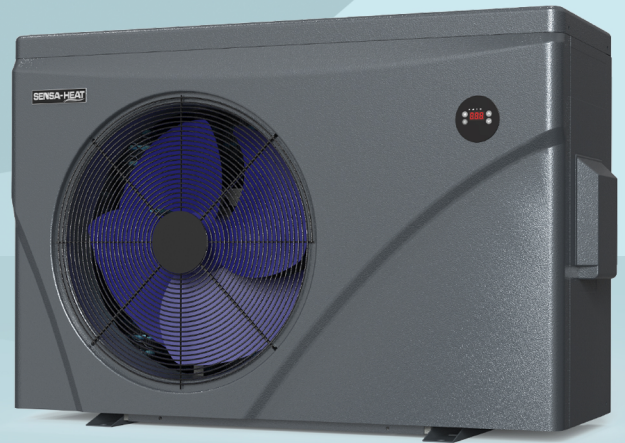


# SENSAHEAT

Premium Inverter Pool & Spa Heat Pumps

## ES SERIES

The SENSEAHEAT ES Series inverter heat pumps have been specifically designed for pool and spa applications across Australia and New Zealand. Ensuring optimum performance and many years of trouble free operation.



- Inverter Technology
- Super Quiet Operation
- Reverse Cycle, Heating & Cooling
- Eco Friendly R32 Gas
- Touch Control
- Wifi Enabled
- Titanium Heat Exchanger
- DC Compressor

### Eco Friendly R32 Refrigerant

R32 is a new generation refrigerant for pool and spa heat pumps. SENSEAHEAT exclusively uses R32 gas in all models making for a more efficient heat pump with a lower environmental impact.

### Soft Start Inverter Technology

Soft start technology is an innovative design, which is capable of smoothing out the start up power demand of the heat pump compressor. Soft start technology helps to reduce the start up power demand by up to 70%.

# SENSAHEAT

Premium Inverter Pool & Spa Heat Pumps



## ES Series Specifications

Model	HPES09	HPES13	HPES16	HPES20	HPES24
PERFORMANCE CONDITION: Air 27C/ Water 27C/ Humid 80%					
Heating capacity (Kw)	9.0	13.0	16.0	20.2	24.2
COP Range	10.5-6.2	10.8-6.3	10.7-6.2	10.8-6.2	10.8-6.3
Average COP at 50% Speed	9	9.2	9.1	9.1	9.2
PERFORMANCE CONDITION: Air 15C/ Water 26C/ Humid 70%					
Heating capacity (Kw)	6.5	9	11	14	16
COP Range	6.5-4.2	6.2-4.5	6.6-4.3	6.5-4.2	6.6-4.5
Average COP at 50% Speed	6.1	6	6.1	6.1	6.2
PERFORMANCE CONDITION: Air 35C/ Water 28C/ Humid 80%					
Cooling Capacity (Kw)	3.6	5	6.1	7.7	8.8
TECHNICAL SPECIFICATIONS					
Reverse Cycle			Standard		
Operating Air Temperature ( C )			0C ~ 43C		
Heating Temperature Range ( C )			18C ~ 40C		
Cooling Temperature Range ( C )			12C ~ 30C		
WiFi			Standard		
Heat Exchanger			Twisted Titanium		
Power Supply			230V 1 Ph		
Electrical Connection	10A Plug	15A Plug	Hard Wired	Hard Wired	Hard Wired
Rated Input Power (Kw)	0.28-1.55	0.41-2.01	0.50-2.56	0.60-3.26	0.72-3.81
Rated Input Current (A)	1.21-6.73	1.76-8.70	2.17-11.12	2.61-14.16	3.13-16.56
Maximum Input Current (A)	9.5	12.5	17.0	19.5	20.5
Sound Level at 1m dB (A)	41.6-53.5	43.9-54.0	46.2-57.3	46.3-58.1	46.9-58.7
Sound Level at 10m dB (A)	21.6-33.5	23.9-34.0	26.2-37.3	26.3-38.1	26.9-38.7
Advised Water Flux (L/Min)	50-70	60-80	80-120	120-150	150-200
Water Connection (mm)			40mm		
Net Weight (kg)	46	49	60	68	68
Net Dimension L x W x H (mm)	903*349*654	903*349*654	991-349-654	991-349-754	991*420*757
WARRANTY**					
Heat Exchanger			25 Years		
Compressor			3 Years		
Parts			2 Years		
On-Site			1 Year		

\*\*Please read T & C's for full details, the above information is only a reference